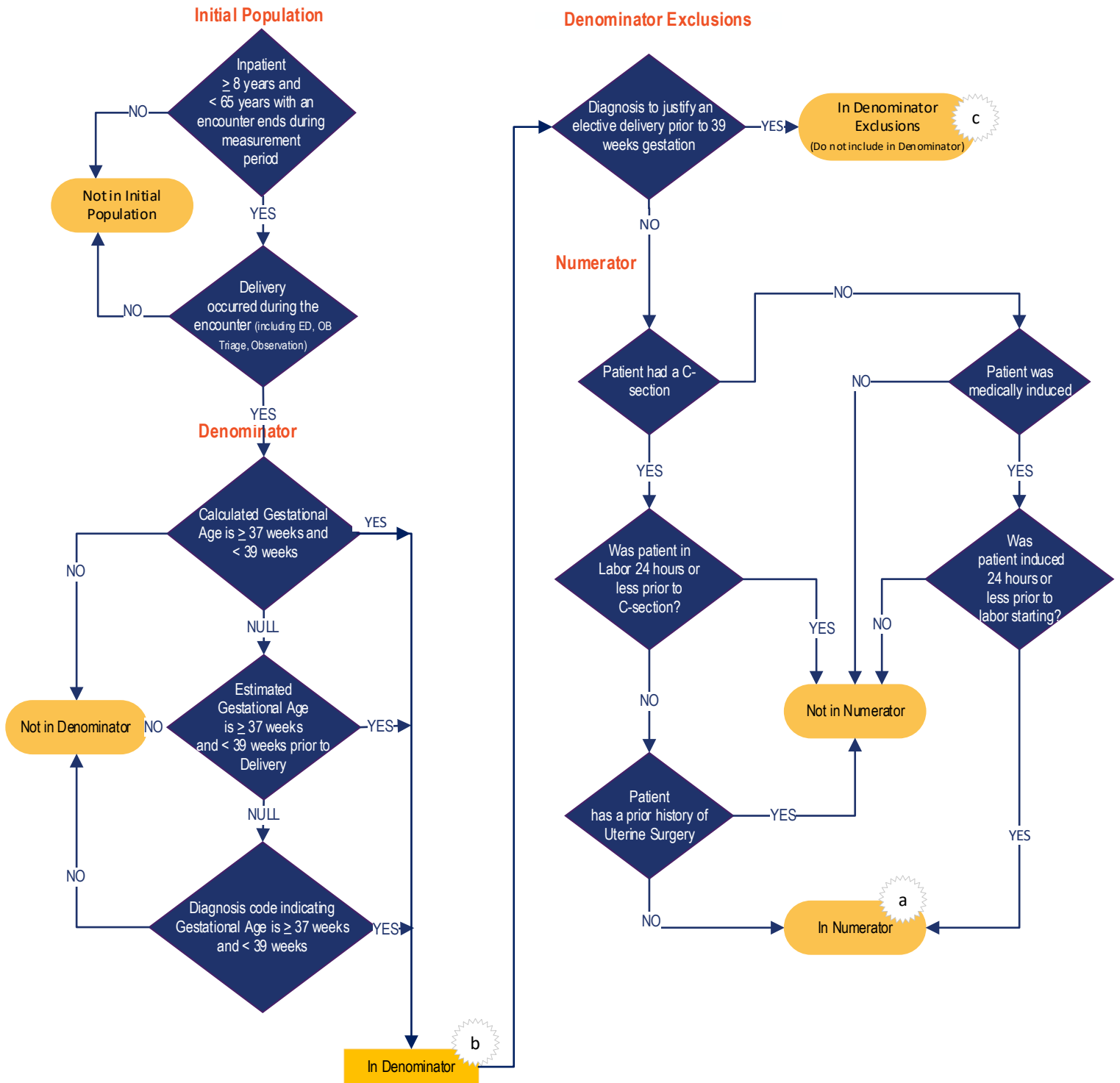


## Elective Delivery

Patients with elective vaginal deliveries or elective cesarean births at  $\geq 37$  and  $< 39$  weeks of gestation completed



### Sample Calculation

Performance Rate =  $\frac{\text{Numerator (a=9 patients)}}{\text{Denominator (b=100 patients) - Denominator Exclusions (c=10 patients)}} = 10\%$

**Measure Flow Narrative**

**Measure Description**

Patients with elective vaginal deliveries or elective cesarean births at  $\geq 37$  and  $< 39$  weeks of gestation completed

**Initial Population**

Inpatient hospitalizations for patients age  $\geq 18$  years and  $< 65$  admitted to the hospital for inpatient acute care who undergo a delivery procedure with a discharge date that ends during the measurement period.

**Denominator**

Inpatient hospitalizations for patients delivering newborns with  $\geq 37$  and  $< 39$  weeks of gestation completed

**Denominator Exclusions**

Inpatient hospitalizations for patients with conditions possibly justifying elective delivery prior to 39 weeks gestation

**Numerator**

Inpatient hospitalizations for patients with elective deliveries by either:

- Medical induction of labor while not in labor prior to the procedure
- Cesarean birth while not in labor and with no history of a prior uterine surgery